

FLYBARLESS MAIN ROTOR 500

Copyright © 2009 I2RC - Innovative Imagieneering LLC. All Rights Reserved

2

1

B

B

A

A

2

1

2

1

Parts List

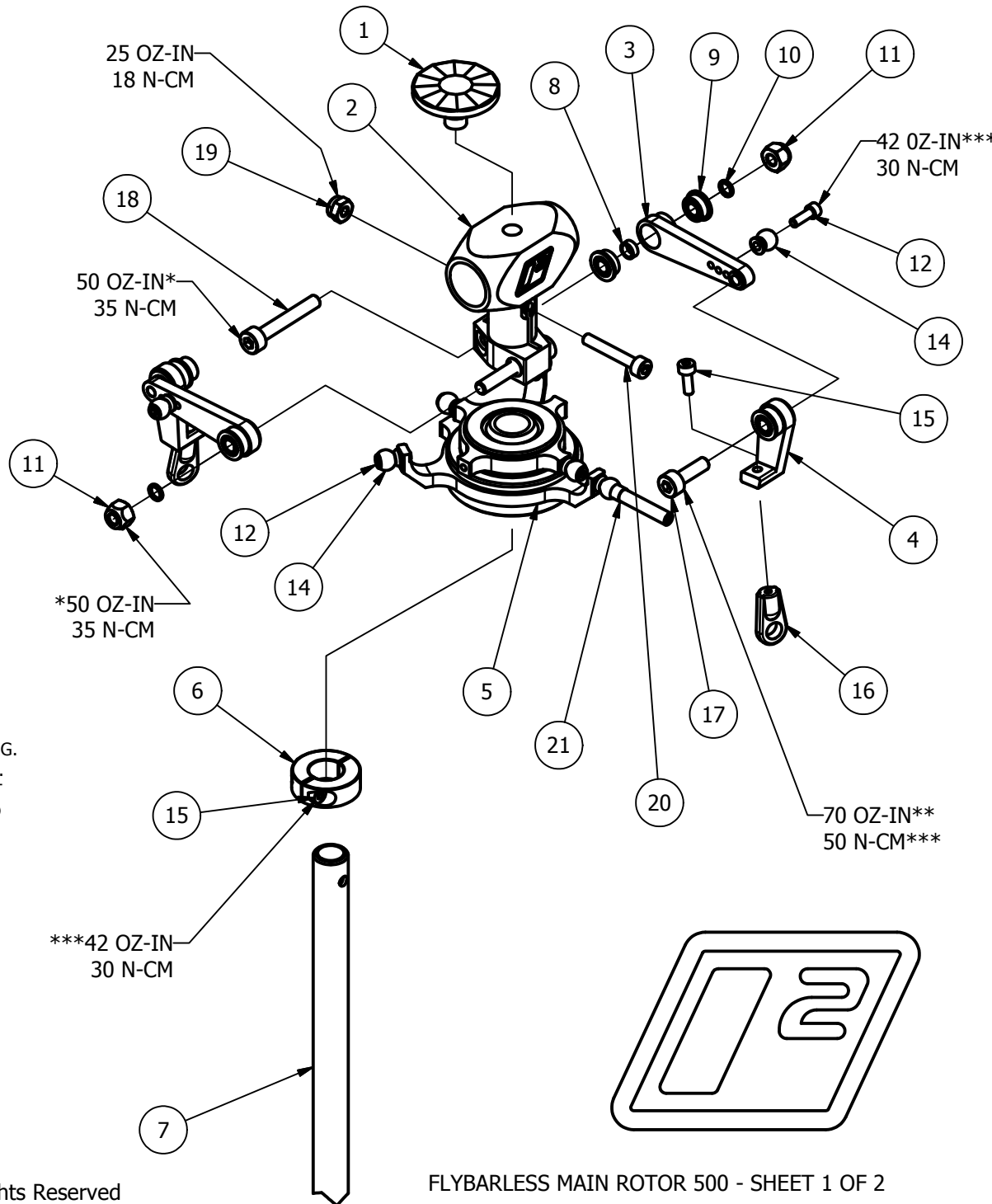
ITEM	QTY	PART NUMBER	DESCRIPTION
1	1	I500-100	Head Button
2	1	I500-101	Main Rotor Housing
3	2	I500-102	Upper Control Lever
4	2	I500-103	Lower Control Lever
5	1	I500-104	Swashplate
6	1	I500-105	CLAMP COLLAR 500
7	1	I500-106	Main Shaft
8	4	3x4x1.5mm	Spacer
9	8	MF63ZZ	Bearing
10	2	3x4x0.5mm	Spacer
11	4	M3	Locknut
12	6	M2 x 6mm	Small Head Cap Screw
14	7	Linkage Ball 500	
15	2	M2 x 6mm	Socket Head Cap Screw
16	2		Ball Link -10
17	2	M3 x 10mm	Socket Head Cap Screw
18	4	M3 x 20mm	Socket Head Cap Screw
19	1	M2.5	Locknut
20	1	M2.5 x 16mm	Socket Head Cap Screw
21	1	I500-112	Swash Anti-Rotation Pin

NOTES:

* TIGHTEN ITEMS 18 EVENLY ON BOTH SIDES OF THE MAIN ROTOR HOUSING. THEN, WHILE HOLDING ITEM 18 WITH A WRENCH, TIGHTEN ITEM 11 NUT. DO NOT OVERTIGHTEN ITEM 11 AS THIS WILL DAMAGE THE BEARINGS. IT ONLY NEEDS TO BE SNUG AS ITEM 11 IS A LOCKNUT DESIGNED TO AVOID LOOSENING.

** DO NOT OVERTIGHTEN ITEM 17 AS THIS WILL DAMAGE THE BEARINGS.

***USE THREAD LOCK ADHESIVE IF THE PROPER TOOL FOR TORQUING IS NOT AVAILABLE. ONCE ADHESIVE IS USED, DO NOT RELY ON TORQUING FOR FUTURE RE-ASSEMBLY.

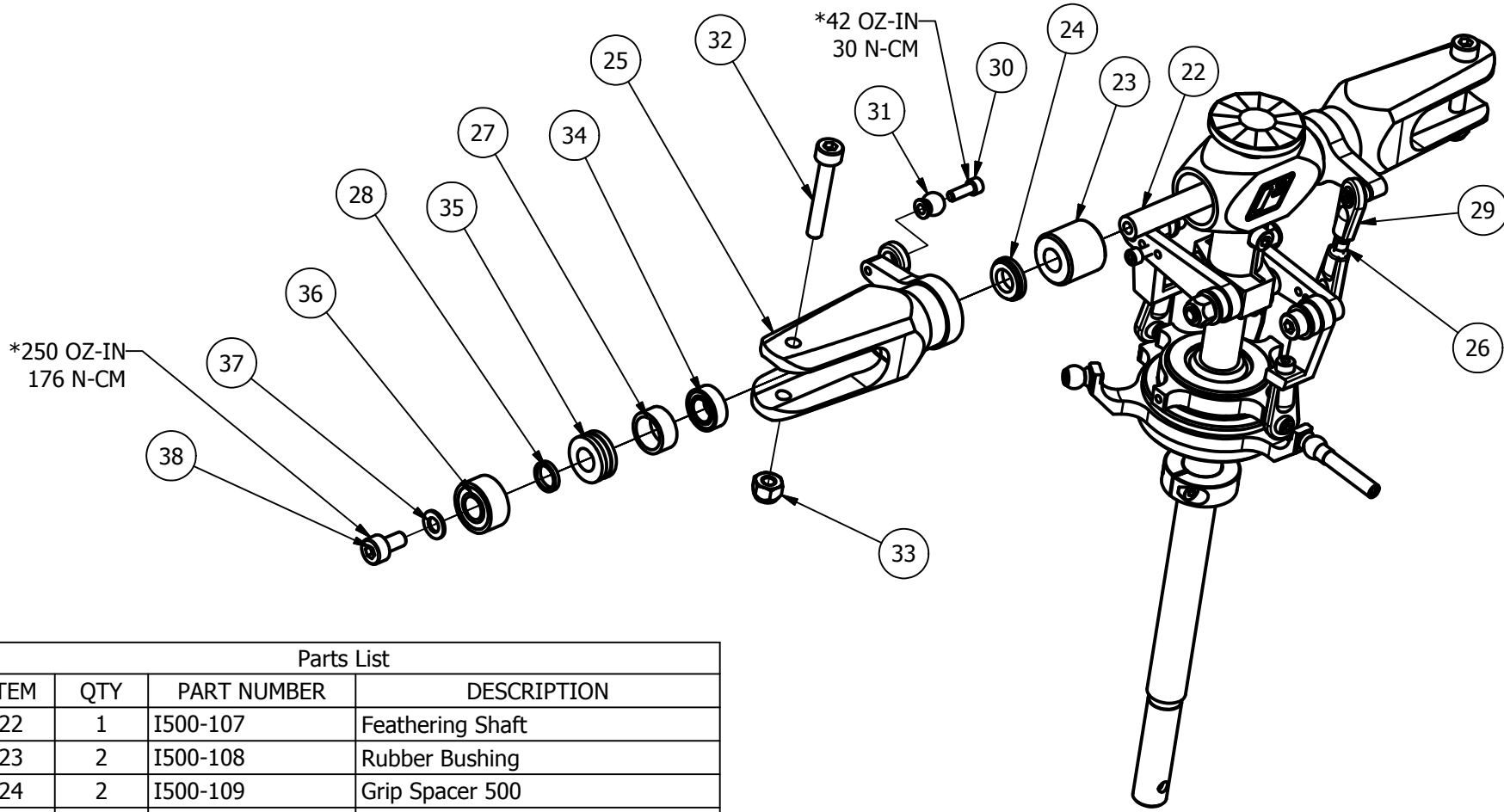


2

1

2

1

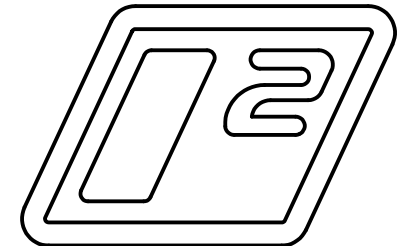


Parts List

ITEM	QTY	PART NUMBER	DESCRIPTION
22	1	I500-107	Feathering Shaft
23	2	I500-108	Rubber Bushing
24	2	I500-109	Grip Spacer 500
25	2	I500-110	Grip - Main
26	2	I500-111	Control Rod
27	2	9x7x4.00	Spacer
28	2	5x6x1.00	Spacer
29	4		Ball Link -10
30	2	M2 x 6mm	Small Head Cap Screw
31	2		Linkage Ball 500
32	2	M3 x 20mm	Socket Head Cap Screw
33	2	M3	Locknut
34	2	MR95ZZ	Bearing
35	2	F5-10M	Bearing - Thrust
36	2	685ZZ	Bearing
37	2	M - 3	Washer
38	2	M3 x 5	Socket Head Cap Screw

NOTE:

*USE THREAD LOCK ADHESIVE IF THE PROPER TOOL FOR TORQUING IS NOT AVAILABLE. ONCE ADHESIVE IS USED, DO NOT RELY ON TORQUING FOR FUTURE RE-ASSEMBLY.



FLYBARLESS MAIN ROTOR 500 - SHEET 2 OF 2

Copyright © 2009 I2RC - Innovative Imagineering LLC. All Rights Reserved

2

1